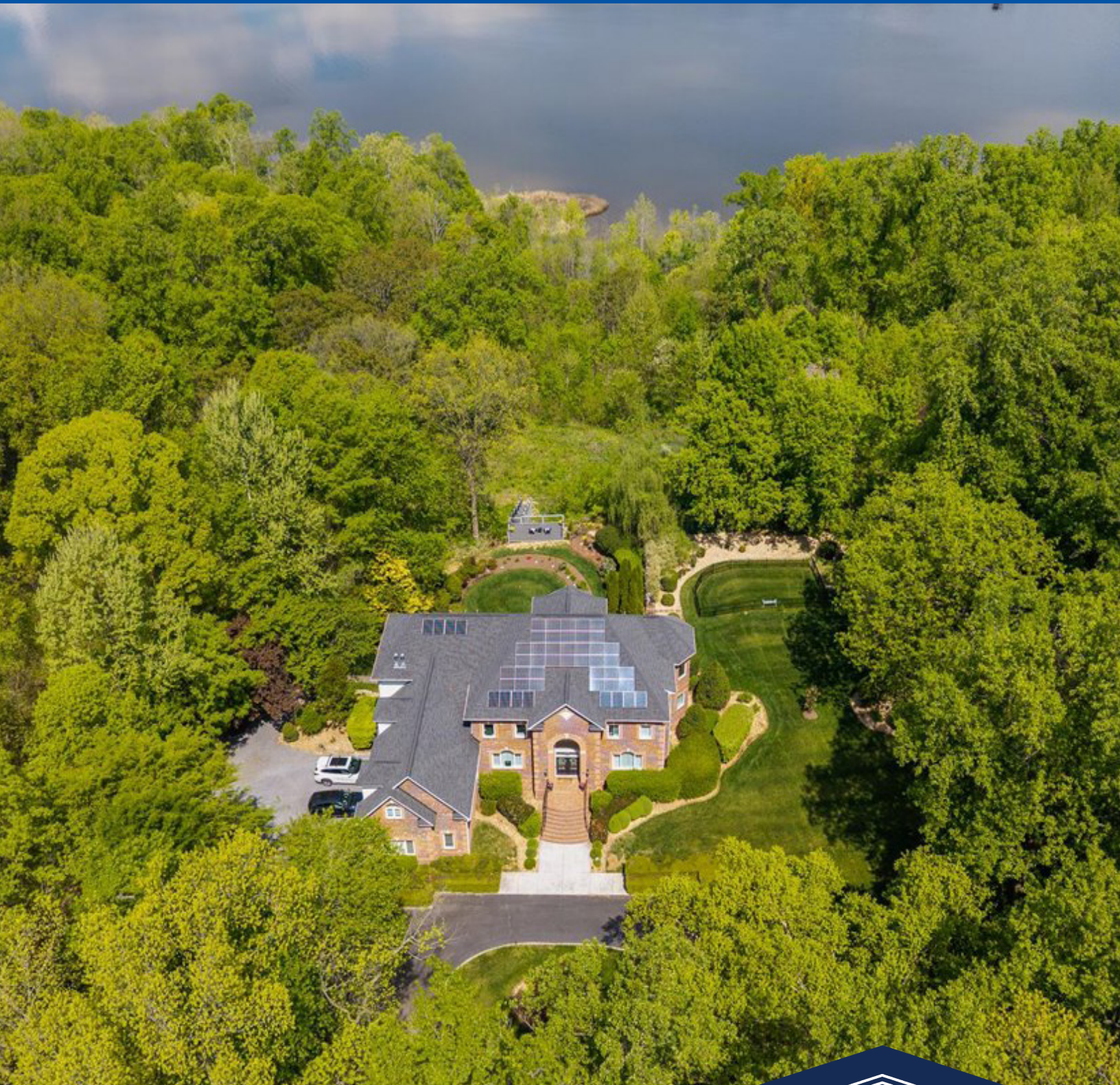


402 Rivers Bend Circle, Chester, Virginia 23836



LP LUXURY
PORTFOLIO
INTERNATIONAL®

Leading REAL ESTATE
COMPANIES
OF THE WORLD®

JOYNER
FINE PROPERTIES

ALWAYS THE FINEST

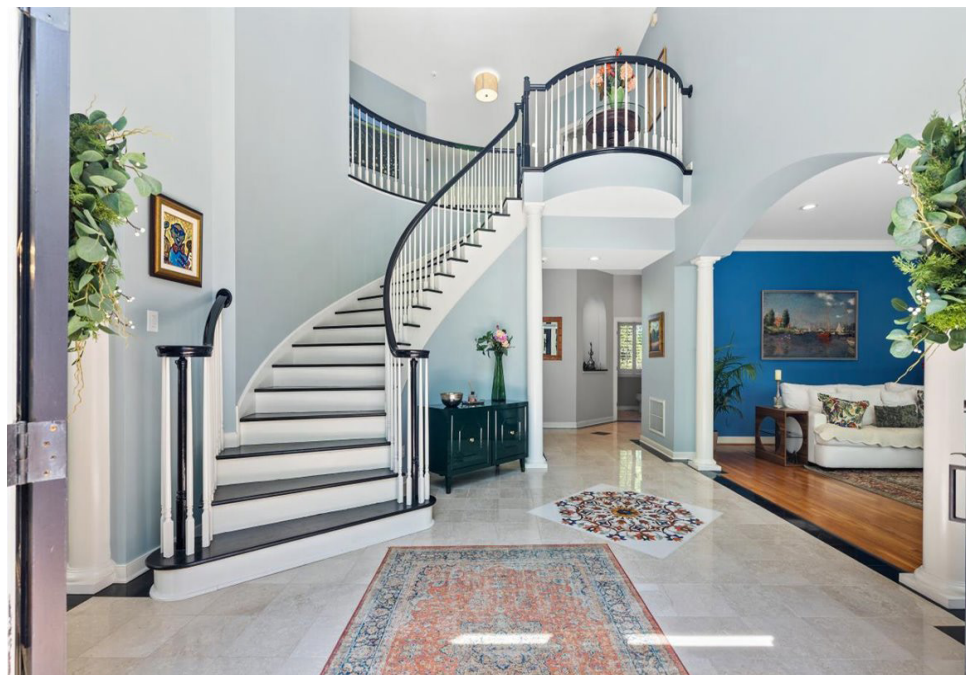
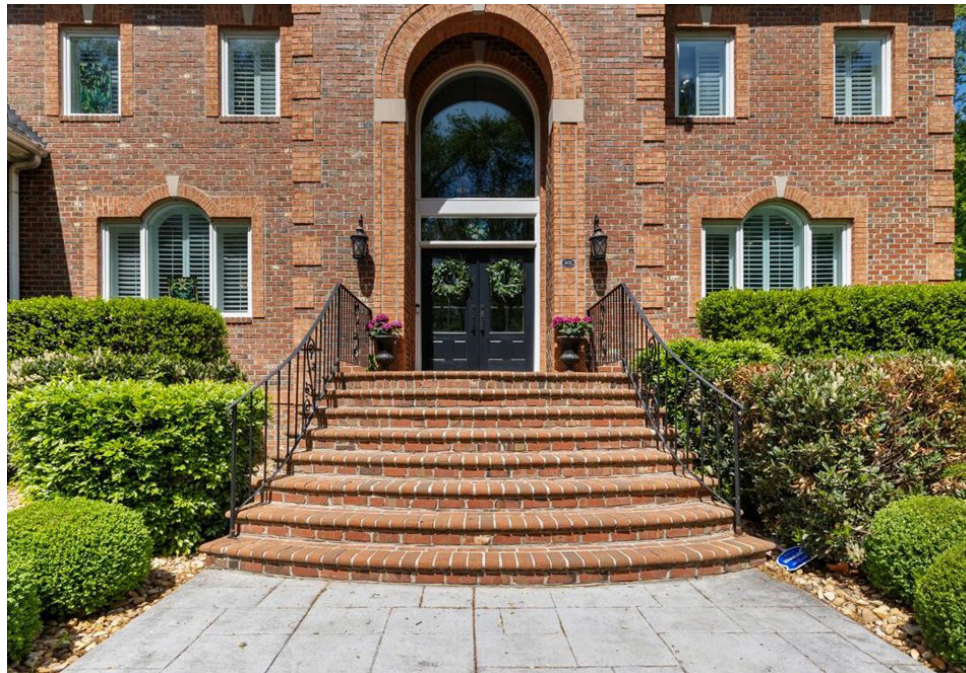
402 Rivers Bend Circle

Imagine waking up each morning, sunlight streaming through vast windows as you sip coffee on your private terrace.

Feel the soft grass beneath your feet as you wander across five acres of lush, secluded grounds—your own sanctuary where every day feels like a retreat. This remarkable estate isn't just a home; it's an invitation to experience the luxury of space, serenity, and connection with nature, all just minutes from downtown Richmond.

Picture evenings spent beside the grand fireplace, laughter echoing through soaring ceilings, the river's shimmering surface a backdrop to your most cherished moments.

Whether you're seeking adventure on the river, quiet reflection in your home office, or the joy of creating memories with family and friends, this estate is a canvas for your dreams.



The Living Spaces



Relax in the great room with a cathedral ceiling, gas fireplace, wet bar, and large walk-in bay window with palladium windows overlooking the river.

The formal living room features recessed lighting, double member crown molding, gas fireplace, and palladium window with shutters.

Enjoy entertaining in the formal dining room with exquisite features including half columns in the archway and elegant molding.



The Kitchen

The massive gourmet kitchen inspires culinary creativity and togetherness.

The features include granite counters, recessed lighting, large 6-sided island with seating, stainless steel appliances including double ovens, under-cabinet lights, large pantry cabinets with pull-outs, and a stationary desk area.

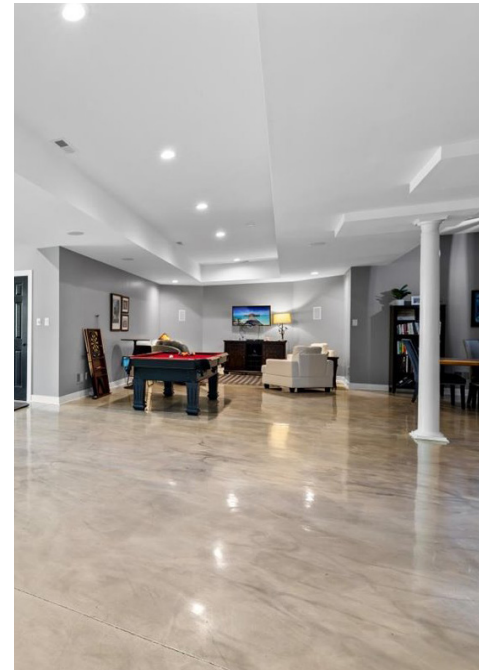
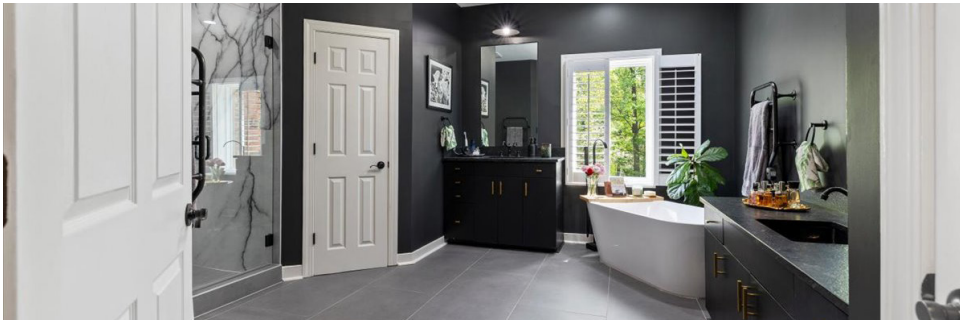


The Bedrooms & Baths



The reimagined primary suite is your personal haven, blending warmth, elegance, and panoramic river views that soothe the soul. It features LVT flooring, crown molding, recessed lights, gas fireplace, large walk-in closet, sliding glass doors to a small deck, coffee bar, and an ensuite bath.

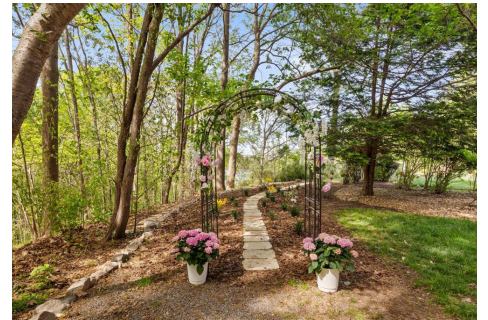
Spa-like bath with double vanities, large soaking tub, glass shower, and a separate water closet.



The Grounds

Host unforgettable gatherings on your sweeping patio, where golden sunsets melt into the water, and every meal is a celebration of the good life.

Take in spectacular river views from the new observation deck, or stroll down the elegant steps to the river, inviting you to experience the tranquility and adventure of river life.



The Features

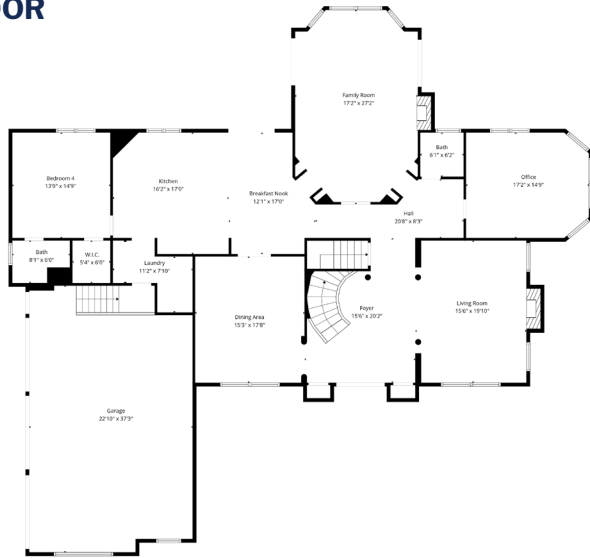


Property Highlights

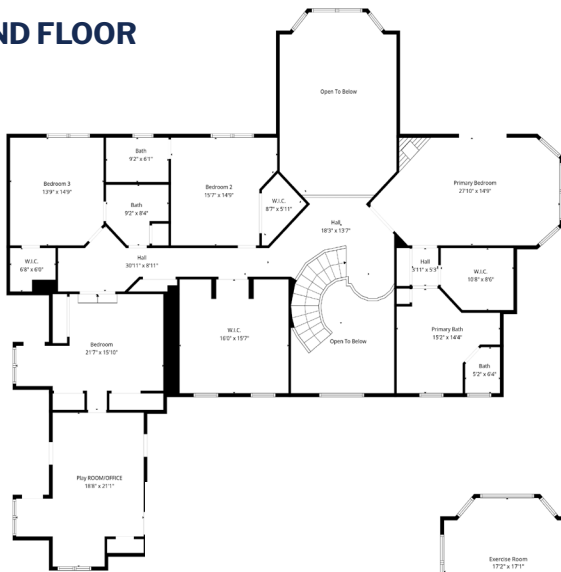
- Views of the James River and the American bald eagles
- Four of the bedrooms are ensuites
- Bright and massive kitchen with views of the river
- Free flowing floor plan with many of the rooms viewing the James River
- Work from home office with thoughtful details
- Plantation shutters throughout
- 2,400 square foot finished basement with full kitchen and full bath, dining area, family room, exercise room, 8 closets, and private entrance
- Potential in-law suite
- 20-foot ceiling height in the foyer and great room with majestic views
- Separate dressing room with granite island top and space galore
- All brick construction
- Solar panels installed December 2025 and fully paid for - designed to cut power bills by up to 48 percent
- Trex Composite deck and stairs completed December 2025
- In-house vacuum system
- Wired for in-house sound system and surround sound in variety of rooms
- Oversized 3-car attached garage with 30-foot long work bench
- The property is Civil War history, overlooking the James River
- Observation deck and stairs leading to the river
- Mature fig trees
- Drive to downtown in only 25 minutes

The Floorplan & Details

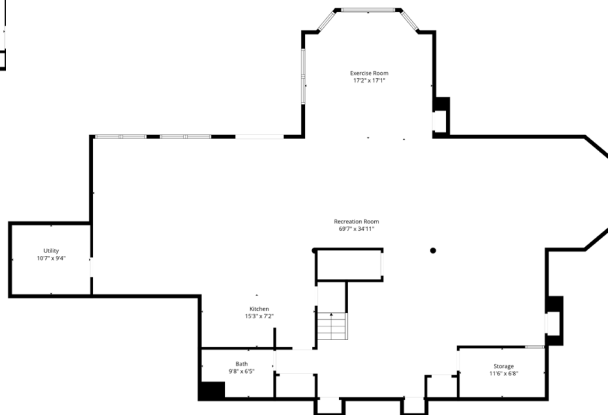
FIRST FLOOR



SECOND FLOOR



BASEMENT



First Level

Foyer:	15'6" x 20'2"
Living Room:	15'6" x 19'10"
Dining Room:	15'3" x 17'8"
Office/Study:	17'2" x 14'9"
Great Room:	17'2" x 27'2"
Kitchen:	16'2" x 17'0"
Breakfast Nook:	12'1" x 17'0"
Bedroom 4:	13'9" x 14'9"
Laundry/Utility:	11'2" x 7'10"

Second Level

Primary Bedroom:	27'10" x 14'9"
Bedroom 2:	15'7" x 14'9"
Bedroom 3:	13'9" x 14'9"
Bedroom 5:	21'7" x 15'10"
Office/Study:	18'8" x 21'1"

Basement

Rec Room:	69'7" x 34'11"
Kitchen:	15'3" x 7'2"
Exercise Room:	17'2" x 17'1"

THE DETAILS

Bedrooms:	5
Bathrooms:	5 Full, 1 Half
Year Built:	1999
Sq.Ft.:	8,168
Heating:	2 Gas Furnaces
Cooling:	4 AC Units
Water Heater:	2 Gas Water Heaters
Utilities:	Public Water Conventional Septic
Schools:	Enon Elementary Elizabeth Davis Middle Thomas Dale High



Wes Atiyeh
 Managing Broker
 804.370.0401
 Wes.Atiyeh@JoynerFP.com

